

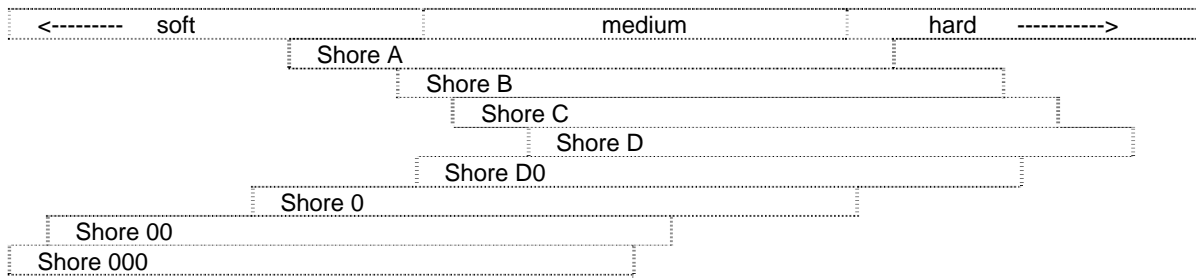
**BAREISS HPE II
Digital SHORE
Hardness Tester**

Volume of delivery
hardness tester HPE II
serial interface cable RS232-HPE II
operating instructions
case

weight of volume of delivery 890 g
weight of HPE II 370 g
dimensions of HPE II
160 x 70 x 40 mm
dimensions of case
240 x 210 x 55 mm



Ranges of Application



Type	Ranges of Application	Standards	Thickness
SHORE A	soft rubber, elastomer, natural rubber products, neoprene, casting resin, polyester, soft-PVC, leather, etc.	DIN EN ISO 868, DIN 53505, ASTM D 2240, ISO 7619, NFT 51-174, BS903 Part. A 26	4 mm 6 mm
SHORE D	hard rubber, hard plastic materials, acrylic glass, Polystyrol, rigid thermoplastics, resopal, printing rolls, vinyl-plates, cellulose -acetate, etc.	DIN EN ISO 868, DIN 53505, ASTM D 2240, ISO 7619, NFT 51-174, BS903 Part. A 26	4 mm 6 mm
SHORE B	medium hard materials of rubber, typewriter rolls, plates	ASTM D 2240	6 mm
SHORE C	plastics and medium hard rubber materials	ASTM D 2240	6 mm
SHORE DO	plastics and medium hard up to hard rubber materials	ASTM D 2240	6 mm
SHORE O	soft elastic materials, printing rolls, medium fast textiles, nylon, Orlon, perlon, rayon	ASTM D 2240	6 mm
SHORE OO SHORE OOO	sponge rubber, foam rubber, silicone	ASTM D 2240	6 mm

 **Bareiss Prüfgerätebau GmbH**

Exclusive Agents for the U.K. and Eire

MAPRA Technik Co.

Tel: 020 8508 4207

Fax: 020 8502 5107

E'mail: info@mapra.co.uk Visit our Website at: www.mapra.co.uk

3 Technical Details

Type	spring force (cN)	contact pressure/ pressure weight	indenter	distance (mm)	range
Shore A	806,50	12,5 N	35 °	2,5	0 - 100
Shore D	4450,0	50,0 N	30°	2,5	0 - 100
Shore B	805,00	1 kg	30°	2,5	0 - 100
Shore C	4445,0	5 kg	35 °	2,5	0 - 100
Shore D0	4445,0	5 kg	3 / 32 "	2,5	0 - 100
Shore 0	805,00	1 kg	3 / 32 "	2,5	0 - 100
Shore 00	111,1	400 g	3 / 32 "	2,5	0 - 100
Shore 000	111,1	400 g	r = 6,35	2,5	0 - 100

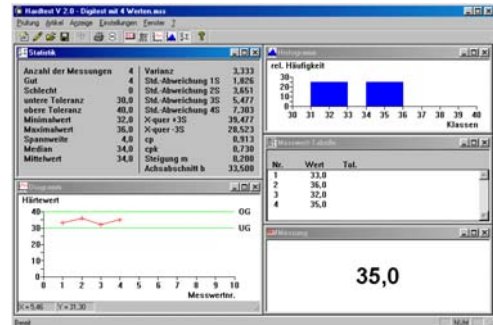
DATA LOGGER:

A 2 – lined LC-display informs about the series of measurements, measuring procedure, measuring result and numbers of stored measured values resolution of 0,5 Shore
 tolerance limits, series of measurements, data out put, baud rate and language are adjustable
 automatic switch off time after 10 minutes
 measuring time adustable between 0 and 99 seconds
 V24.RS 232 C interface for the subsequent treatment of the measured values via printer or PC
 measurement and statistical evaluation in 10 series of measurements
 memory for 2000 measured values
 8-hour operation by accumulator
in connection with EPSON LQ 300+



HARDTEST for WINDOWS -- Software:

For WINDOWS 95 / 98 / 2000 / NT / ME / XP



radio transmission of the measured values to PC

complete system
 plug-in power set, receiver HF-MS-M, sender FH-MS-Sx
 minimum range of 15 m
in connection with Hardtest for WINDOWS



MAPRA technik co.

Exclusive Agents for the U.K. and Eire

marcel aubert
 SWITZERLAND

bareiss
 GERMANY

63 SPRING GROVE
 LOUGHTON, ESSEX
 IG10 4QE ENGLAND

TELEPHONE: 020 8508 4207
 FAX: 020 8502 5107
 Email: info@mapra.co.uk

▶ Visit our website at: www.mapra.co.uk